

PART OF S.W. 1/4  
 SECTION 20, T.6N., R.1W., S.L.B. & M.

124-1

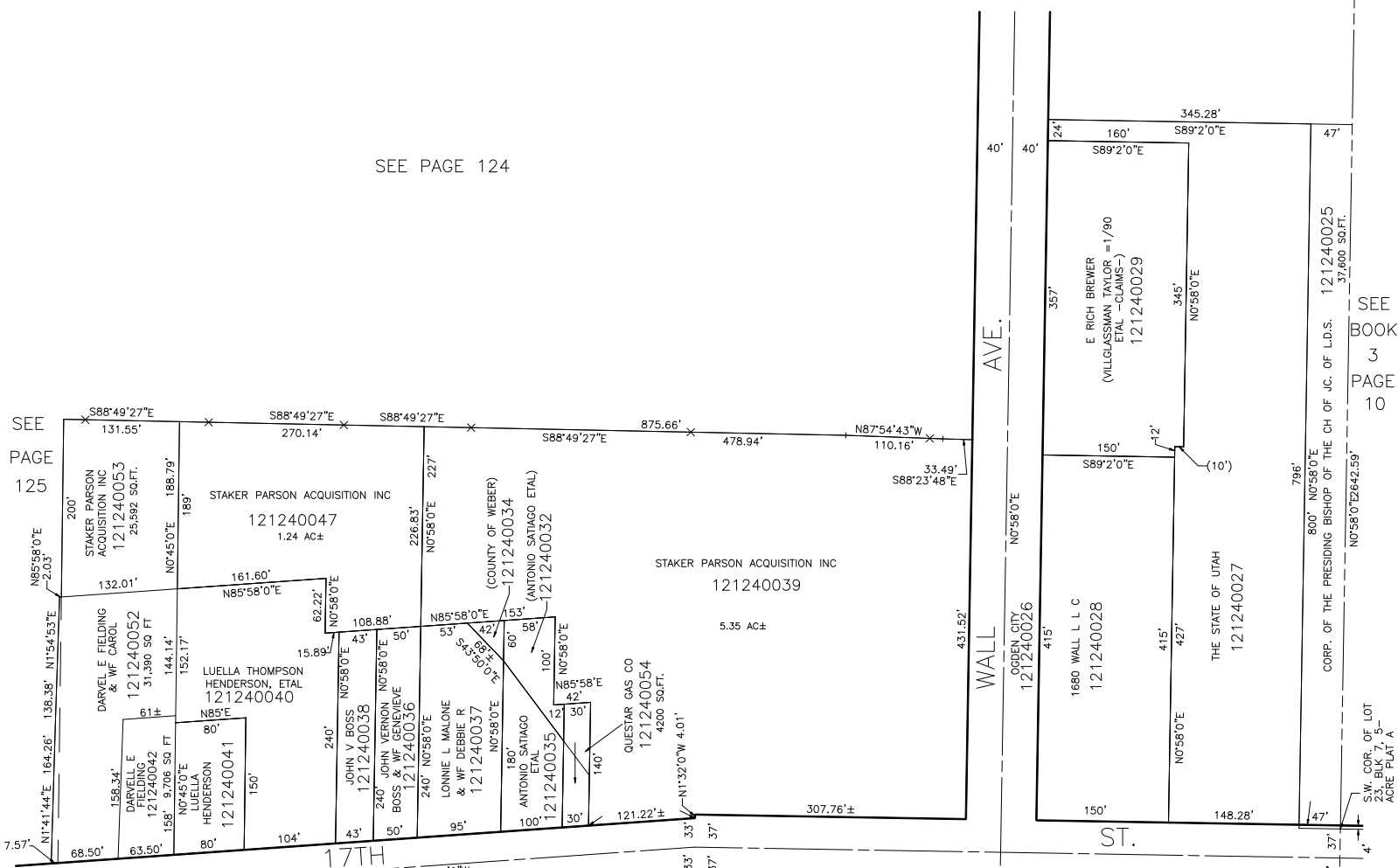
TAXING UNIT: 25

IN OGDEN CITY  
 SCALE 1" = 100'

N.E. COR. OF  
 S.W. 1/4 OF  
 SEC. 20

SEE PAGE 124

SEE  
 PAGE  
 125



SEE PAGE 127

SEE  
 BOOK  
 3  
 PAGE  
 10

12

R.B. 7-69